

Crystal Mountain Weddings

2012

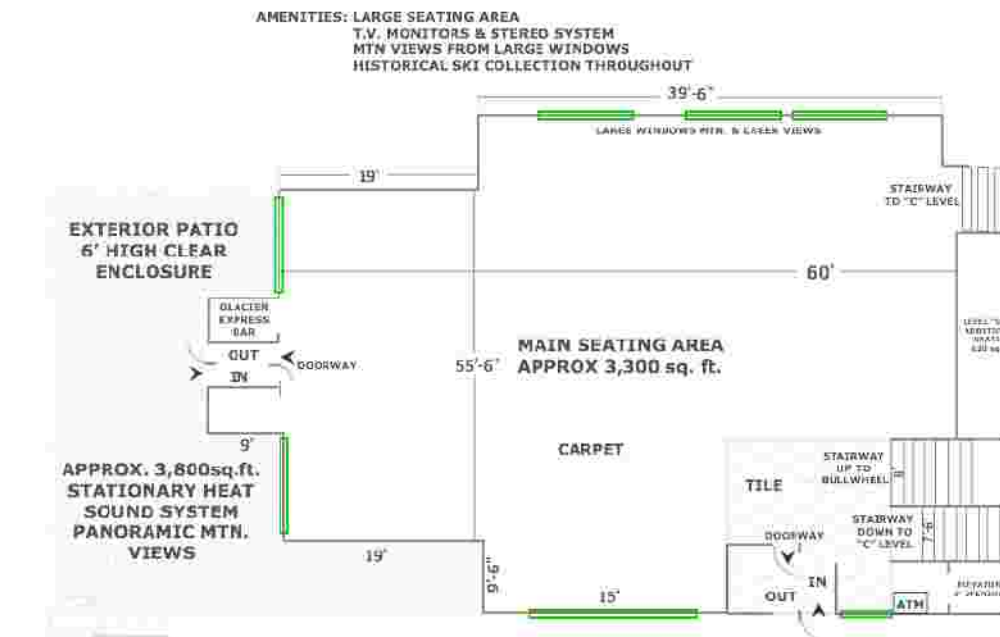
Say "I do" at the base or summit of Crystal Mountain! The Cascade Mountains, including neighboring Mount Rainier, serve as your breathtaking backdrop. Crystal Mountain is an easy scenic drive just 75 miles from Seattle and 60 miles from Tacoma. With on-mountain lodging, in-house catering and a multitude of free-time activities you have the recipe for a successful special event for 12-400 guests.

www.crystalmountainresort.com/weddings

Chinook Level in the Base Lodge

Includes basic round banquet chairs, rectangle tables and basic white linens.

Max Occupancy w/o tables/with	Reception Only (8 hr max)	Ceremony Only (1.5 hr max)	Ceremony & Reception
375/280	\$ 1,500	\$1,000	\$1,750



Rates are subject to change

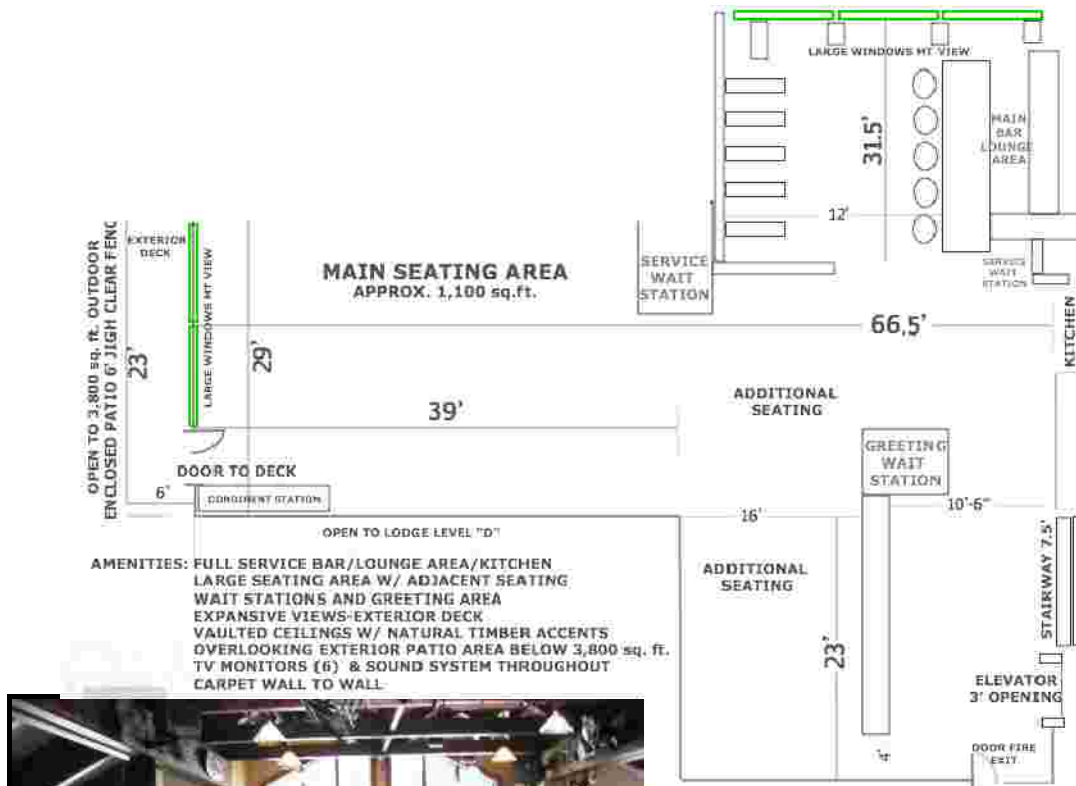
Bullwheel in the Base Lodge

Includes wooden chairs, rectangle tables, large bar and basic white linens.

Max Occupancy w/o tables/with	Reception Only (8 hr max)	Ceremony Only (1.5 hr max)	Ceremony & Reception
200/175	\$ 1,250	\$1,000	\$1,500



Rates are subject to change

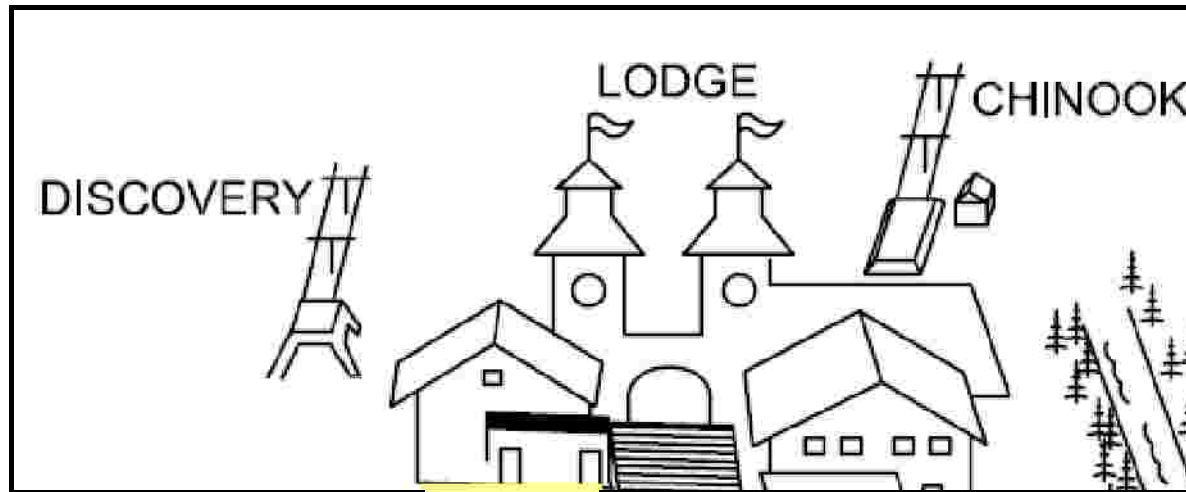


Slopeside Plaza (new for 2012)

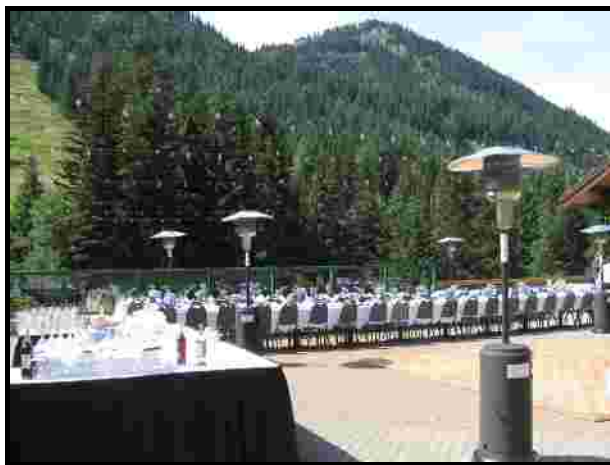
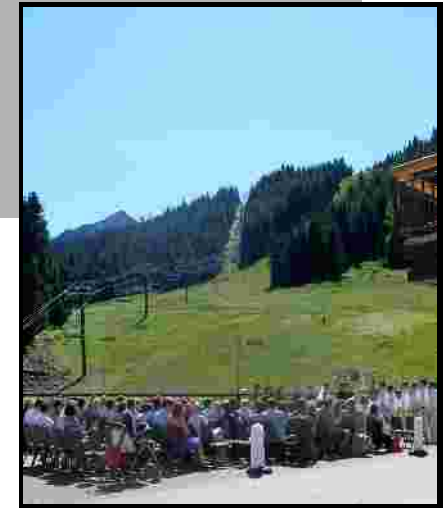
Pictures shown are of the Sundeck (similar space and views). Ceremony includes basic round banquet chairs. Reception includes green picnic tables or standard tables and chairs (based on availability) and basic white linens. Plaza is 95' x 75'.

Max Occupancy w/o tables/with	Reception Only (8 hr max)	Ceremony Only (1.5 hr max)	Ceremony & Reception
600/350	\$1,250	\$1,000	\$1,750

(Located to the bottom left of the master staircase)



**New
Plaza**



Rates are subject to change

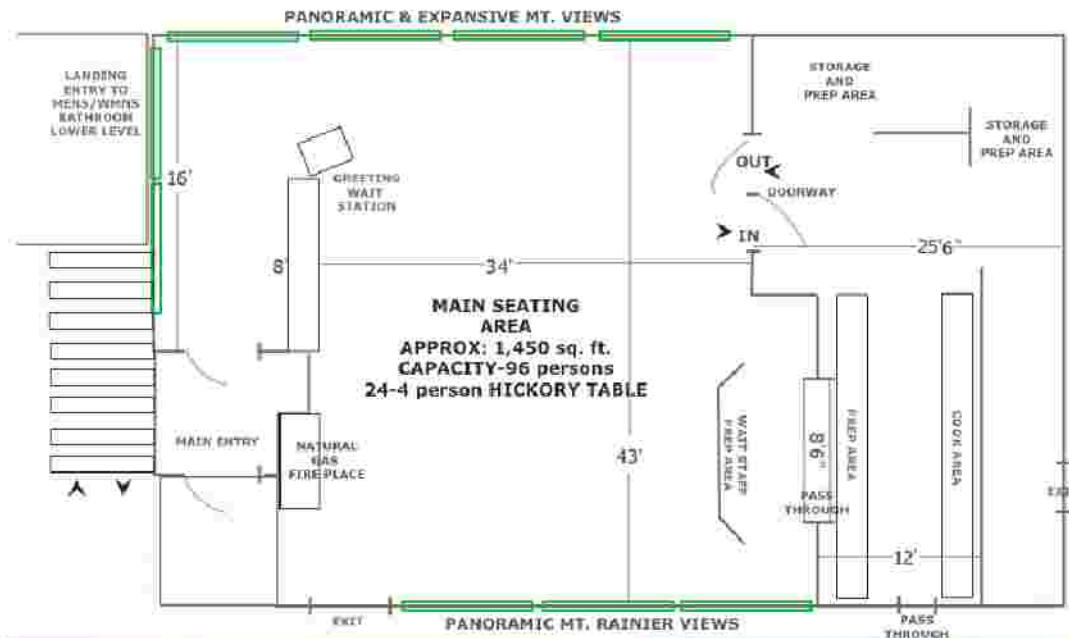
Summit of Crystal Mountain

Outdoor ceremony includes gondola access & 12 white folding chairs; remainder of guests would be standing. Summit House reception includes chairs & tables in lower right photo & basic white linens.

Summit House Max Occupancy (With tables)	Summit Ceremony Max Occupancy 12 chairs & standing	Summit House Reception Only (6 hr max)*	Summit Ceremony Only (1.5 hr max)	Summit Ceremony & Summit House Reception* (7 hour max)
50- 96	300	\$ 1500	\$1,500-3,000+ **	\$3,250 (96 ppl max)

****Summit ceremony venue fee is \$3,000 for up to 150 guests on a Saturday, \$2,000 on a Friday or Sunday, \$1,500 for a Monday-Thursday including scenic gondola transportation. Each guest over 150 will qualify for a group scenic gondola rate (\$3 discount per person) charged to the master account. Group ticket order must be placed at least 5 days in advance. *Limited dates and times available**

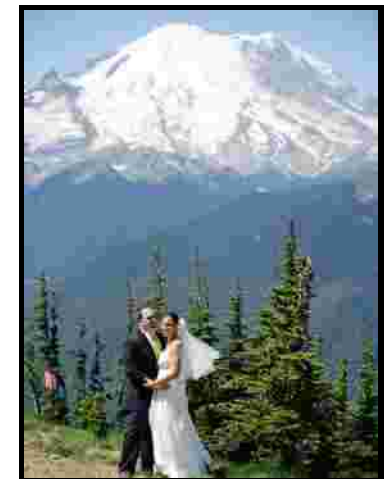
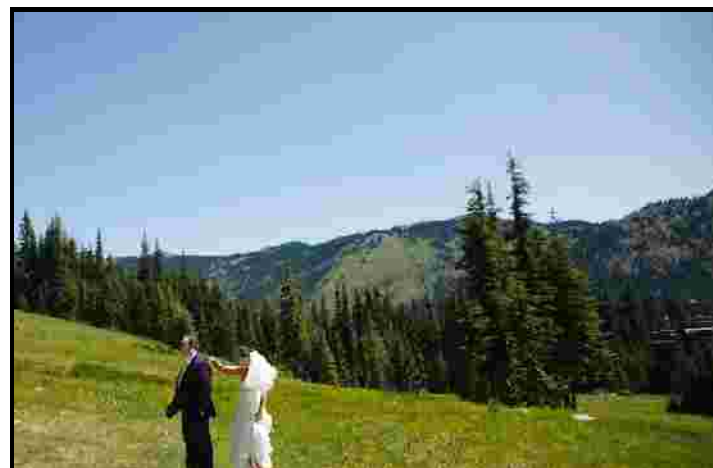
**AMENITIES: THE MOST UNIQUE SETTING-WASHINGTON'S HIGHEST RESTAURANT
LARGE SEATING AREA - WAIT STATIONS AND GREETING AREA
EXPANSIVE VIEWS - MT. RAINIER PANORAMIC/ONE OF A KIND
VAULTED CEILINGS W/ NATURAL TIMBER ACCENTS & KNOTTY PINE FINISH
SOUND SYSTEM-CARPET WALL TO WALL
FULL SERVICE KITCHEN-BEER&WINE SELECTION**



Elopement- Summit Ceremony

Must be booked with a Summit House dinner, lunch or brunch reservation during regular operations.
Includes 12 chairs and summit venue only. No decorations or setup.

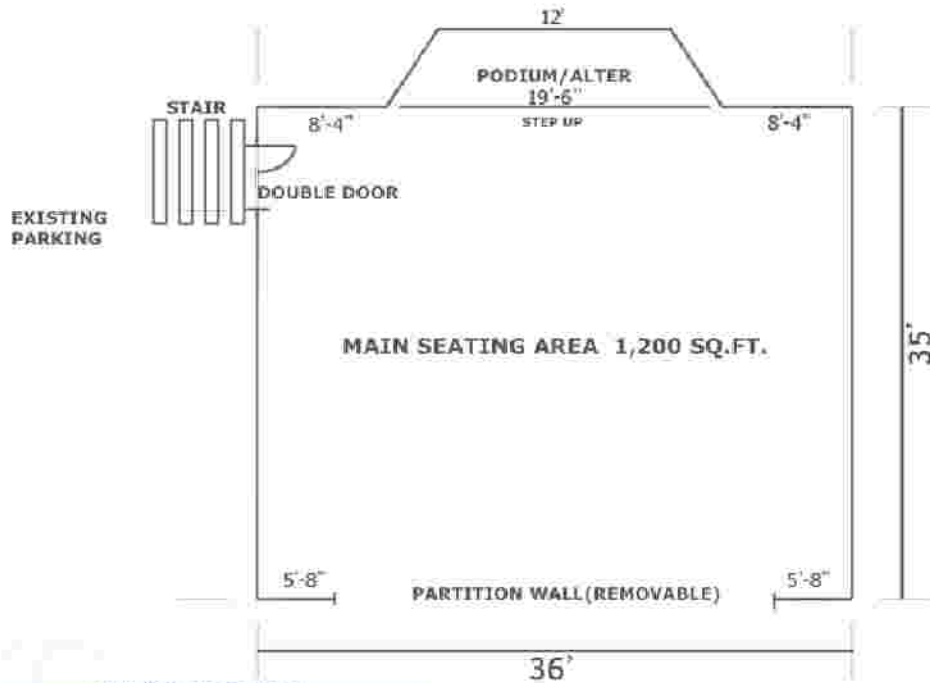
Max Occupancy 12 Chairs 15 people	Ceremony Only (1/2 hr max) (Only 12 chairs) \$250
---	--



Chapel at the Base Area

Includes setup of basic round banquet chairs

Max Occupancy Ceremony	Ceremony Only (1.5 hr max)
150	\$500



OPEN TO 1,000 sq. ft. ADDITIONAL SPACE



Rates are subject to change

2012 Additional Information

Deposits and Payment Policies: A non-refundable 50% venue fee deposit is required to reserve rental site upon booking and the remainder will be due 30 days prior to your event along with a non-refundable 50% deposit of the anticipated catering charges. If payment is not received your event may be subject to cancellation. The remaining balance is due at the conclusion of the event. Late payments will be assessed a \$25 charge per day.

Reception & Ceremony Site Rates: Venue rates include exclusive use of the contracted venue and Banquet Manager to help assist in venue and catering planning needs within the resort. Venue fees for receptions includes basic set-up & break-down, tables, basic white table linens and napkins, indoor chairs (each venue has unique chairs), standard glassware, dinnerware and silverware. Venue fee for ceremony site includes basic set-up & break-down of banquet chairs (base area only). The Summit ceremony venue includes setup of 12 folding chairs, remaining guests must stand. The Slopeside Plaza reception venue includes round green picnic furniture or tables and chairs, depending on availability.

Menus & Catering Crystal Mountain Catering welcomes the opportunity to create special menus that are chosen from our printed suggestions. We require a finalized menu a minimum of 3 weeks prior to your special event. The wedding cake will be the only food that is allowed in from an outside caterer. There will be a cake-cutting fee per person attending the wedding. Additional fees for full-service will apply.

Crystal Mountain In- House Catering (Food and Beverage) Minimums*:

June & September	May & October	July & August
Saturday: \$3,500.00 minimum	Saturday: \$2,500 minimum	Saturday: \$4,500 minimum
Friday & Sunday: \$3,000.00 minimum	Friday & Sunday: \$2,000 minimum	Friday & Sunday: \$3,000 minimum
Monday-Thursday: \$2,000.00 minimum	Monday- Thursday: \$1,000 minimum	Monday –Thursday: \$2,000.00 minimum

*Food & Beverage minimums may vary at the Summit House. Please inquire.

*All prices are subject to a 18% service charge (20% for plated) & 7.8% WA State Sales Tax. Minimums are subject to change until finalized per contract.

Lodging: Crystal Mountain does not own or operate any of the lodging facilities at the resort. Please visit www.staycrystal.com for information on room types, pricing, group discounts, room blocks and availability for two on-mountain facilities and one nearby resort. There are also other nearby lodging options, please visit "Vacation Rentals" under "Plan your Trip" at www.crystallmountainresort.com

The Crystal Mountain Lodging Suites, located at Crystal Mountain, offers condominiums (sleeps 2-8 people), a heated swimming pool, and is conveniently located within a couple minute walk to the base area. Contact: 1.888.ON.THE.MT

The Crystal Mountain Hotels, located at Crystal Mountain, offers standard hotel rooms (sleeps 1-6), a breakfast buffet, and is conveniently located within a couple minute walk to the base area. Contact: 1.888.754.6400

The Alta Crystal Resort, located 10 minutes from Crystal Mountain, offers suites, cabins, a honeymoon cabin, a heated swimming pool, hot tub and a fun family friendly environment. Contact: 1.800.277.6475